

## FLANGES FOR LARGE DIAMETER PLASTIC PIPES

The main task of pipe systems is to transport a medium in a safe way and without any leakage from one place to another. For polyethylene and polypropylene systems homogenous jointing connections are preferably used, as the sustainability and safety are guaranteed and they are maintenance-free as well.

Flange connections are also a very important jointing method within a pipe system, as they are a detachable connection and thus allow a transition to other pipe materials.

The main areas of applications for flange connections are:

- Connection to valves and shut-off devices
- Connection to other materials (e.g. steel)
- Connection to buildings
- Maintenance ports
- Pipe caps
- Connection to special parts and fittings



Stub-ends, ID1700, PE 100, PN6, for sea-outfall-project



Integral type flange, PE100



Connection PEHD/Stainless Steel

The bigger the pipe dimension, the less standard flanges can be found on the market. The pipe producers design the flanges professionally according to the state of the art and according to the existing norms and guidelines. For pipes made of thermoplastic materials, DVS 2205 part 4 is often followed based on the AD instruction sheets B7 and B8.

Furthermore the most relevant norms provide an orientation regarding the selection of the screw quantity and the general dimensioning. Typical norms for steel flanges are, among others:

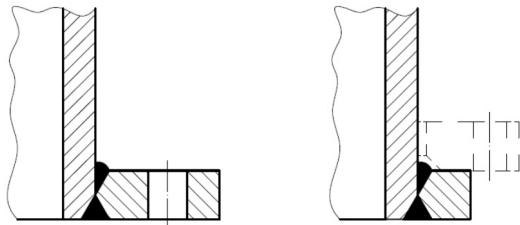
- ANSI/ASME B16.5 Class 150
- ASTM D 4024
- DIN 2673
- EN 1092
- etc.

The relevant flange norms have been included for small and middle-sized diameters also in the classical plastic norms for fittings, as for example in DIN 16962 / DIN 16963.

On the basis of all of this information an initial assessment regarding the dimensioning can be done. Especially regarding flange thickness, contact area, gasket etc. should be taken into account.

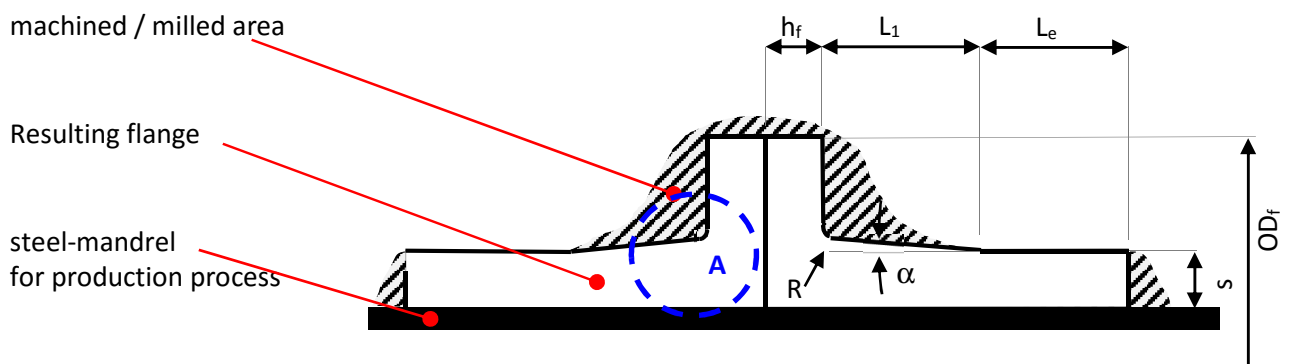
Before starting with the actual calculation it is helpful to make a scale drawing in order to better illustrate the proportions.

The production procedure of the flange is also very crucial for the dimensioning. Homogeneously produced flanges on basis of molded, wound (helical extruded) or axially-extruded semi-finished parts are preferable compared to welded constructions. Welded constructions are mostly used for non and low pressure application.



Welded flanges according to DVS 2205

Especially for large diameter pipes, the production should be carried out on a homogeneously wound pipe (helically extruded) and should be later machined by milling process in order to get the required shape. Thus, no extrusion seams are necessary which positively improves the strength property. The blue marked area „A“ in the sketch below is mostly loaded by bending moment and especially is to be considered.



Homogenous Flanges made out of helical extruded pipes

If loose-type flanges are required, then usually it is manufactured by using:

- Stub-end made of polyethylene or polypropylene
- Loose-type flange made of metallic material ( optionally coated with plastic) or fiber-reinforced plastics (GRP)

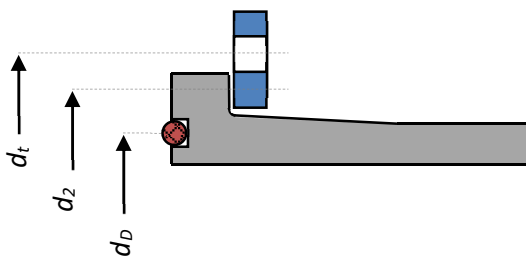
Backing rings made of steel or GRP are often also used with integral flanges due to the creep behavior of thermoplastic materials and the relatively low elastic modulus to improve the load distribution and the associated load. Thus a decoupled load situation is created and the advantages of the respective materials can be benefited from.

The choice of sealing material and the sealing geometry is very important. O-ring sealings have proven themselves for plastic flanges or flat sealings/gaskets in connection with the profiled surface of the stub-end. Both serve to improve the sealing effect by partially increasing the surface pressure. Elastomer materials are principally used as sealing material – the preferred hardness generally is approx. 50-70 Shore A. When choosing the sealing material also the thermic and chemical resistance has to be considered. The properties of the sealing (hardness, flexibility, etc) have a direct influence on the necessary tightening torque for the screws, just as friction and greasing between screws and nuts.

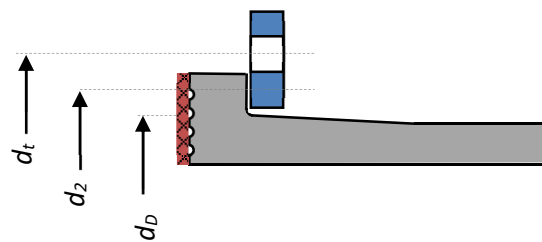
Typical values for sufficient tightening torque for M16 are for example 50 Nm...

Schematic drawing

a) O-Ring



b) Flat sealing/gasket with profiled surface of stub end



#### Dimensioning of the screws:

For plastic flanges the medium distance between screw holes should not be bigger than 80 mm or 5 x diameter of holes. During the calculation it always has to differ between the operating condition and the installation condition.

The surface pressure between lose flange and bund should not exceed the permissible value of thermoplastics. The same applies for the backing flanges at integral flange connections.

The necessary bolt force for flat sealing during operation is calculated as follows:

$$P_{SB} = \frac{p}{10} \cdot \left( \frac{\pi \cdot d_D^2}{4} + 3,8 d_D \cdot k_1 \right)$$

$P_{SB}$  = screw force during operation [N]

$p$  = working pressure [bar]

$d_D$  = middle diameter of gasket [mm]

$K_1$  = gasket characteristics DVS 2205-4 (depends from material and medium) [-]

As general rule for rubber gaskets, the screw force in operation is higher as in the installation situation, however this should always be tested according to DVS 2205-4.

For O-ring sealing the position of the o-ring is crucial, resulting the formula. The groove for the O-ring should be positioned close to the pipes wall.

For integral flanges:

for stub ends

$$P_{SB} = \frac{p \cdot \pi \cdot d_D^2}{40} \cdot \frac{y_1}{y_2} \qquad P_{SB} = \frac{p \cdot \pi \cdot d_D^2}{40}$$

$Y_1$  = distance between outer diameter of flange and medium diameter of pipe

$$Y_1 = (OD_f - ID - s)/2$$

$Y_2$  = distance between outer diameter of flange and medium diameter of screw hole circle

$$Y_2 = (OD_f - d_t)/2$$

### Dimensioning of stub end and integral type flange

The required height of stub-end and integral type flange is calculated by the maximum bending moment of inertia. The moment of inertia can be calculated according following formula

$$W = \frac{P_{SB} \cdot A_2 \cdot A_4 \cdot S}{K_{(A_1, A_3)}} \cdot a$$

$K$  = allowable strength acc. creep rupture curves (depending from time and temperature)

$A_2$  = reduction factor for chemicals acc. DVS 2205

$A_4$  = reduction factor for specific strength acc. DVS 2205

$S$  = Safety factor

The height itself can be calculated as follows:

for stub ends

$$h_f = C \cdot \sqrt{\frac{C_1 \cdot W}{d_2 \cdot \pi}}$$

for integral type flanges

$$h_f = C \cdot \sqrt{\frac{C_1 \cdot W}{d_t \cdot \pi - n \cdot d_L}}$$

$h_f$  = Thickness flange (stub end)

$C$  = for homogenously stub end and flanges = 0,9  
for welded stub end and flanges = 1,1

$C_1$  = for homogenously stub end and flanges = 2  
for welded stub end and flanges = 3

$d_2$  = medium diameter of contact between flange and stub end

$d_t$  = diameter screw hole circle

$d_L$  = diameter holes for screws

Furthermore should be considered:

- the angle  $\alpha$  should be ca. 15°
- the length  $L_1$  should be  $> h_f$
- at the transition from flange to pipe wall always a sufficient radius should be considered (depends from diameter, typical values  $R = 5$  until 10 mm)



Long-term testing of Flange-Connection PE100, ID1900, PN6  
at laboratory UGPM, Oman

**Conclusion:**

The technical calculation of flanges depend from the design of the whole flange-connection. All joining partners (stub-end, backing-ring, screws, sealing etc.) have an influence on the needed dimensions of the flange and have to be considered.

The highest accuracy is reached by using finite element calculation, but a rough calculation can be done easily by using the formulae of literature and under consideration of experience.

The worldwide plastic pipe industry is showing many smart solutions for flange-connections. For large pipe diameters the smartest solution for Polyethylene and Polypropylene is using helical extruded flanges. The flange-body is homogenously produced and there are no limitations in wall-thickness or other flange dimensions.

Author:  
Stephan Füllgrabe  
Plaspitec GmbH, Germany